



*A consumer validated  
Superbrand in piping category  
for consecutive 4 years*



*India's Most Trusted Pipe Brand  
based on TRA's Brand Trust  
Report for the 5<sup>th</sup> time*

**Power of Desire**



*India's Most Desired  
Brand based on TRA's Brand Trust  
Report 2022*



CIN NO: L25200GJ1996PLC029134

**Registered & Corporate Office: Astral Limited**  
207/1, 'Astral House', B/h Rajpath Club, Off S. G. Highway, Ahmedabad - 380059.  
Ph: +91-79 6621 2000 | Fax: +91-79 6621 2121  
E-mail: info@astralltd.com | Website: www.astralltd.com

For Export Inquiries: export@astralltd.com



**ASTRAL TOLL FREE  
1800 233 7957**

Please get in touch with us between 10 AM to 6 PM between  
Monday to Friday and the last Saturday of the month.  
We will remain closed on Public Holidays.



CELEBRATING  
**25** YEARS  
OF TRUST &  
INNOVATION

INTRODUCING  
Thermoplastic Industrial Ball Valves

**VALUE ENGINEERED FOR  
DRIPLESS PERFORMANCE**



## THERMOPLASTIC BALL VALVES



### INTRODUCTION

The Astral Industrial Series True Union ball valve incorporates state-of-the-art manufacturing technology and cutting-edge features, making it one of the most advanced valves currently available in the market. The valves are used in many applications where acids & corrosive chemicals are used in place of stainless systems when a greater corrosion is desired. They are used in a variety of application such as chemical process Industries, aggressive acid ,Mining & Mineral processing , pulp & paper and plating & Metal Treatment etc. Its exceptional smoothness of operation, coupled with low operating torque values, ensures trouble-free service and a long operational lifespan. The Industrial Series valves represent our commitment to providing the industry with the finest solutions, achieved through the integration of high-performance components such as PTFE seats and FKM/EPDM rubber rings/gaskets.

These valves are easily removable from their position and can be fully serviced, thanks to their double union design. Rigorous quality control measures have been implemented throughout the manufacturing process of the Industrial Series valves, including comprehensive low and high-pressure testing for every individual unit. This meticulous testing guarantees trouble-free operation under all service conditions.

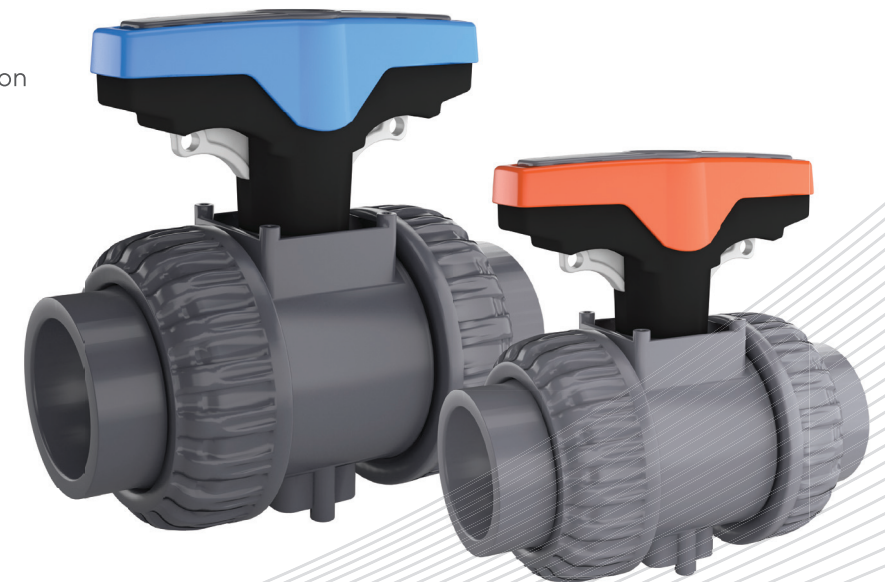
Our valves are available in both uPVC and CPVC materials, perfectly complementing our range of piping systems - Astral Aquarius Plus and Astral Chempro. By offering this comprehensive product line, Astral solidifies its position as the leading one-step solution provider for all your piping needs.

## APPLICATION AREAS

- Aquatic and animal life support System
- Mining & mineral processing
- Aggressive Acid
- Pulp & paper
- Chemical process industries
- Plating & metal treatment
- Power plants

## PRODUCT DETAILS

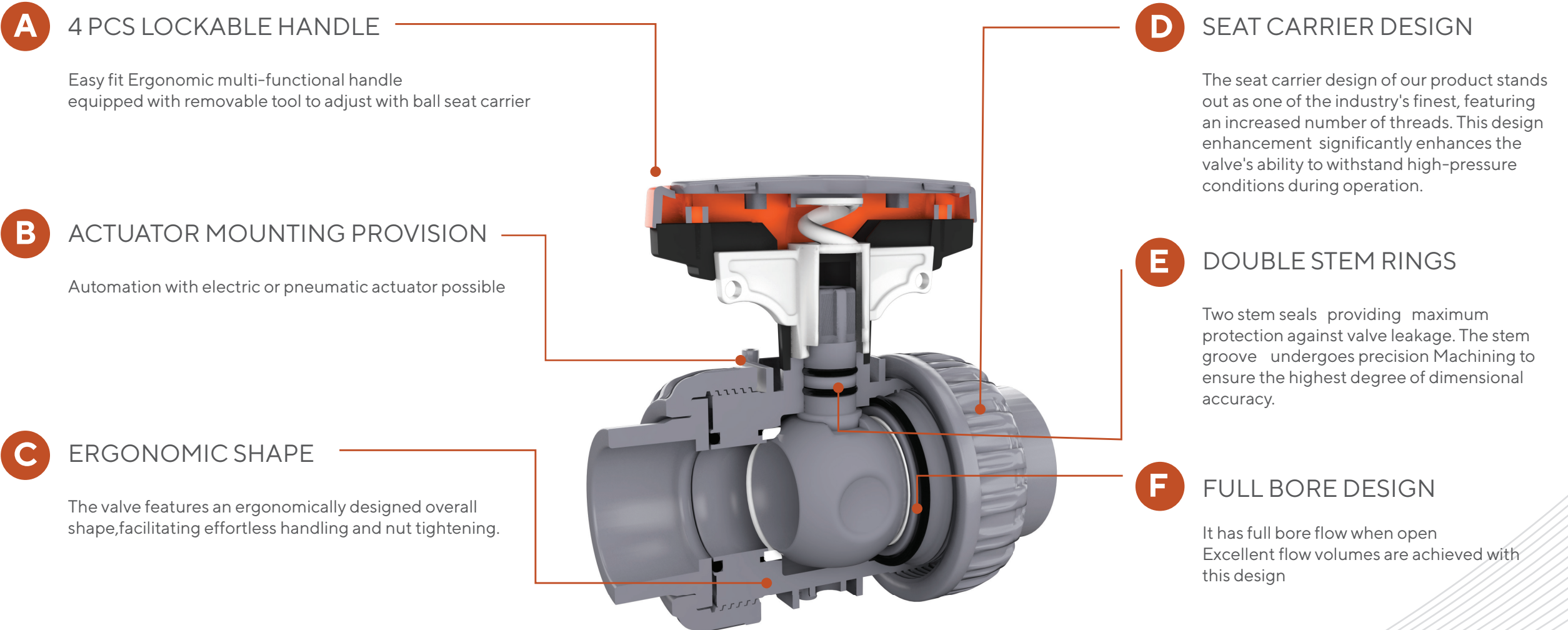
- **Size:** ½" - 4" (15mm to 100mm)
- **Material:** uPVC, CPVC, PP Handle
- **Joint End:**
  1. Flanged
  2. Socket (IPS/Metric)
- **Actuation:**
  - 1: Electric Actuation
  - 2: Pneumatic Actuation
- **Seat:** PTFE
- **Seals:** EPDM Or FKM
- **Pressure Rating:**
  1. SIZE: ½" - 2" : 235 PSI (16kg/cm<sup>2</sup>) & 2½" - 4": 150 PSI (10 kg/cm<sup>2</sup>) @ 73°F for Socket type
  2. SIZE: ½" - 4": 150 PSI (10 kg/cm<sup>2</sup>) @ 73°F for Flange type



### STANDARDS

ASTM D 1784 | ASTM D 2467  
ASTM F 439 | ASTM F 1970

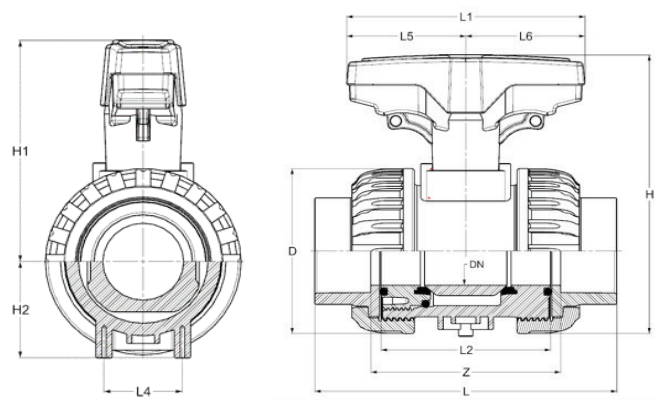
## FEATURES



## DIMENSION TABLE

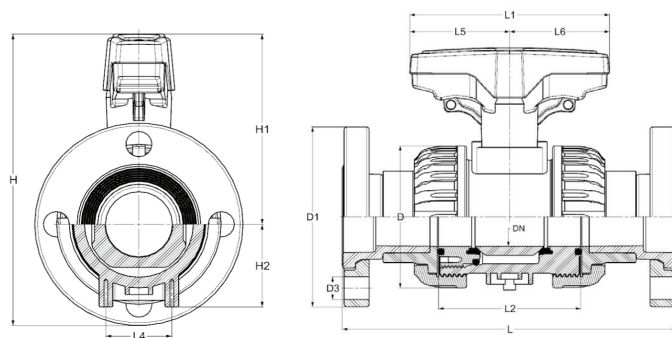
FOR FLANGE TYPE

Size [Inch]	D1	H	H1	H2	L
1/2"	89	116	71	28	162
3/4"	98	131	81	32	177
1"	108	144	90	37	198
1-1/4"	117	163	105	44	218
1-1/2"	126	185	122	53	244
2"	152	218	142	62	274
2-1/2"	178	248	160	77	294
3"	190	272	177	90	331
4"	230	326	211	107	393



FOR SOCKET TYPE

Size [Inch]	L	D	H	H1	H2
1/2"	118	53	99	71	28
3/4"	130	61	113	81	32
1"	147	71	127	90	37
1-1/4"	165	84	149	105	44
1-1/2"	181	101	175	122	53
2"	207	120	204	142	62
2-1/2"	229	152	237	160	77
3"	257	170	267	177	90
4"	314	208	318	211	107



## TEMPERATURE PRESSURE RATING

System Operating Temperature °F (°C)			100 (38)	110 (43)	120 (49)	130 (54)	140 (60)	150 (66)	160 (71)	170 (77)	180 (82)	190 (88)	200 (93)	210 (99)
Valve Pressure Rating psi (Mpa)	1/2" - 2"	uPVC	235 (1.62)	211 (1.45)	150 (1.03)	75 (0.52)	50 (0.34)	-0- (-0-)	-0- (-0-)	-0- (-0-)	-0- (-0-)	-0- (-0-)	-0- (-0-)	-0- (-0-)
		CPVC	235 (1.62)	219 (1.51)	170 (1.17)	145 (1.0)	130 (0.90)	110 (0.76)	90 (0.62)	80 (0.55)	70 (0.48)	60 (0.41)	50 (0.34)	-0- (-0-)
	2-1/2" - 4"	uPVC	150 (1.03)	135 (0.93)	110 (0.76)	75 (0.52)	50 (0.34)	-0- (-0-)	-0- (-0-)	-0- (-0-)	-0- (-0-)	-0- (-0-)	-0- (-0-)	-0- (-0-)
		CPVC	150 (1.03)	140 (0.97)	130 (0.9)	120 (0.83)	110 (0.76)	110 (0.70)	90 (0.62)	80 (0.55)	70 (0.48)	60 (0.41)	50 (0.34)	-0- (-0-)

\*Actual values may vary

\*All Dimensions are in MM.

## INDUSTRIAL TRUE UNION BALL VALVE

### ASSEMBLY PARTS



NO.	COMPONENT	QTY.	MATERIAL
1	Key for opening	1	PVC/CPVC
2	Handle	1	PP
3	Safety lock	1	POM
4	Stem O ring	2	EPDM/FKM
5	Stem	1	PVC/CPVC
6	Union Nut	2	PVC/CPVC
7	Socket	2	PVC/CPVC
8	Socket seal O ring	2	EPDM/FKM
9	Seat Carrier	1	PVC/CPVC
10	Body Seal O ring	1	EPDM/FKM
11	Ball Seat (Teflon)	2	PTFE
12	Ball	1	PVC/CPVC
13	Body	1	PVC/CPVC